





DEALER DAYS SERVICE NEWS FROM SPIETH

Service Topics

- Springoard - Anti-Slip rubbers
- Service-kit „Ergojet Rio“
- Floor anchor testing device
- Service-kit PB „Melbourne“
- Rails for uneven bars



Alexander Bühler



Team Leader Service & Event

I am 31 years old and since 2016 by SPIETH

I was a competitive gymnast for more than 20 years

I am a proud father of a 3 year old boy

I am a musician and play bass in a rock band





Miklós Baróthy

Service and Sales

I am 32 years old and since 2018 by SPIETH

I have played water polo for over 20 years

I am the proud father of a 2 year old girl

I am the head coach of SSV Esslingen, in the German first division.



Valentin Röhrich

Sport service technicians

I am 25 years old since 2023 by SPIETH

I was a gymnast and I am still practicing

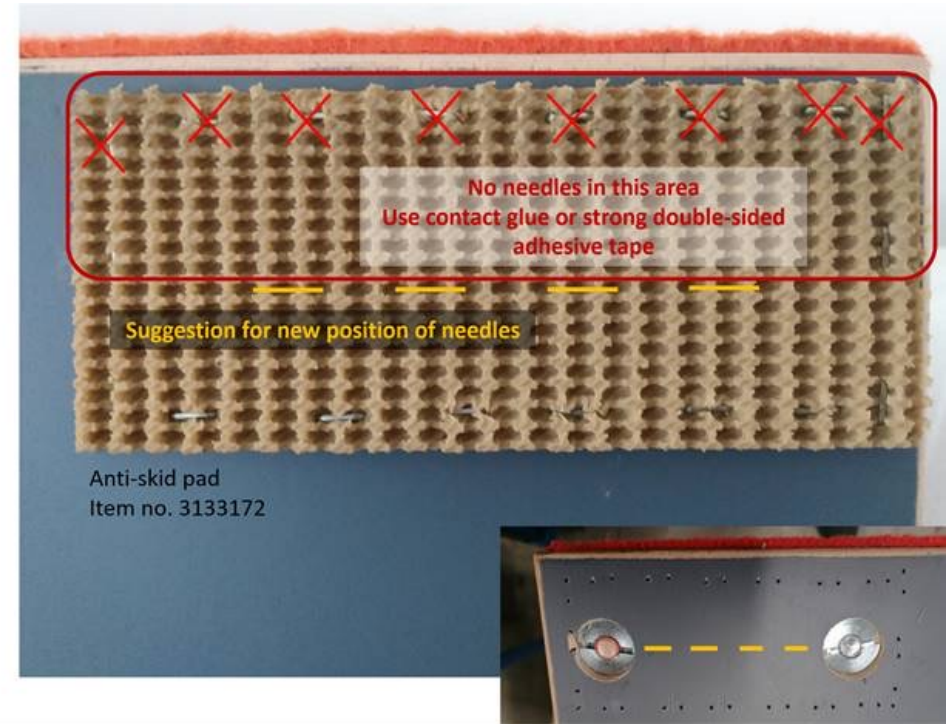
I am studying machine construction technician





Anti-slip rubber for Springboard „Moscow 5“ and „Moscow 8“

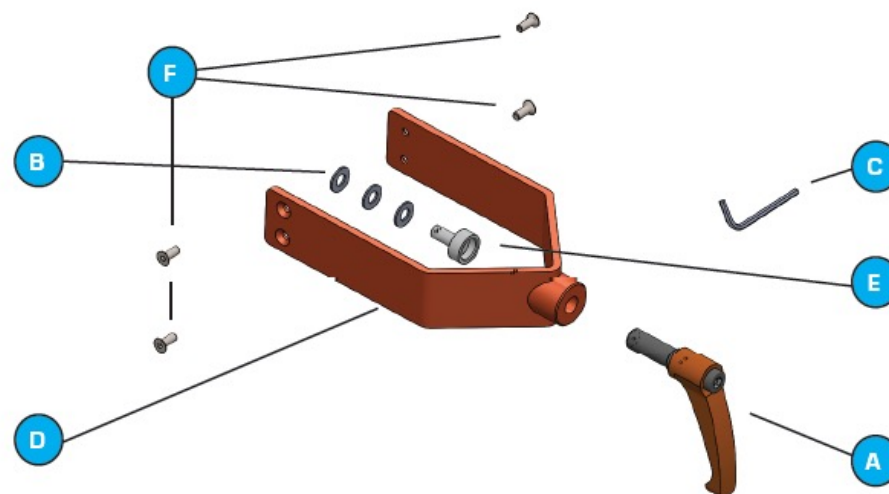
- The needles damage the Run up Plate
- Weekly check of the anti-slip rubbers
- Use a hammer to knock back the tacker needles





Service-kit „Ergojet Rio“

- Suitable for all „Ergojet Rio“ vaulting tables
- The length of the thread of the lever has been modified
- M16x40 from M16x32



Scope of delivery and included necessary tools

A. 3182038	1x Clamping Lever M16x40
B. 3129313	3x Thrust washer Ø20x10x1.5
C. 3630020	1x Allen key 4 mm
D. 4147970	1x Clamping band (M16)
E. 4147976	1x Pressure pin
F. 3006305	4x Countersunk head screw DIN 7991 M6x16





Floor anchor testing device

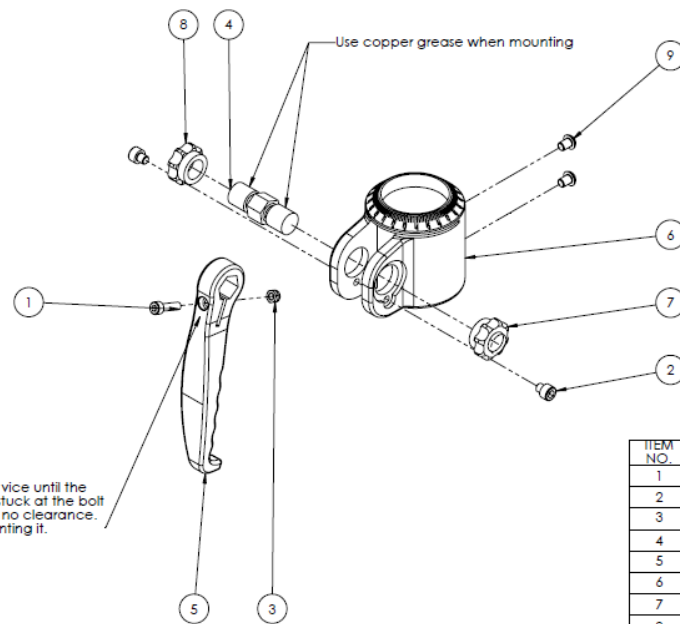


- Tension load: min. 8.000 N
- Testing is performed vertically using a dial gauge
- Test load: 10.000 N
- Required tension must hold 1 minute of test load
- **Loss over 500 N : blocked and replaced**





Service-kit Parallel Bar „Melbourne“



- The diameters and the material of the threaded bolt has been changed
- Bronze to steel
- Change the thread

ITEM NO.	PART NUMBER	Description	QTY.
1	3004206	DIN 912 M5 x 20 -- 20N	1
2	3004301	DIN 912 M6 x 6--- 6N	2
3	3027000	Prevailing torque nut DIN 985 - M5	1
4	4148944	Screw Pin TR16x4	1
5	4143745	Clamping Lever	1
6	4145100	Clamping Head	1
7	4148945	Nut T116x4 RH	1
8	4148950	Nut T116x4 LH	1
9	3004925	ISO 7380 - M6 x 8 --- 8N	2

Assembly Drawing of:	Clamping System		
Item No:	2204668	Rev:	04
		Page:	1 / 1





Rails for uneven bars



- Check the locking pins
- The position of the locking pins has been changed
- An additional safety factor has been added
- On the picture is the old version



A person is seen from behind, wearing a black jacket with the 'SPIETH' logo in blue on the back. The logo consists of four slanted parallel lines followed by the word 'SPIETH'. The person is standing in a sports arena, with a blurred background showing other people and structures. A large, semi-transparent orange circle is overlaid on the left side of the image, containing the text 'THANKS FOR YOUR ATTENTION.' in white, uppercase letters.

THANKS FOR YOUR
ATTENTION.

 **SPIETH**

IGN